

O EDIFÍCIO LANDMARK
E OUTRAS
ESTRUTURAS DE TRANSIÇÃO

Eng. Mario Franco

25/05/10



1

EDIFÍCIO LANDMARK

Arq.: Marc Rubin (Botti Rubin)

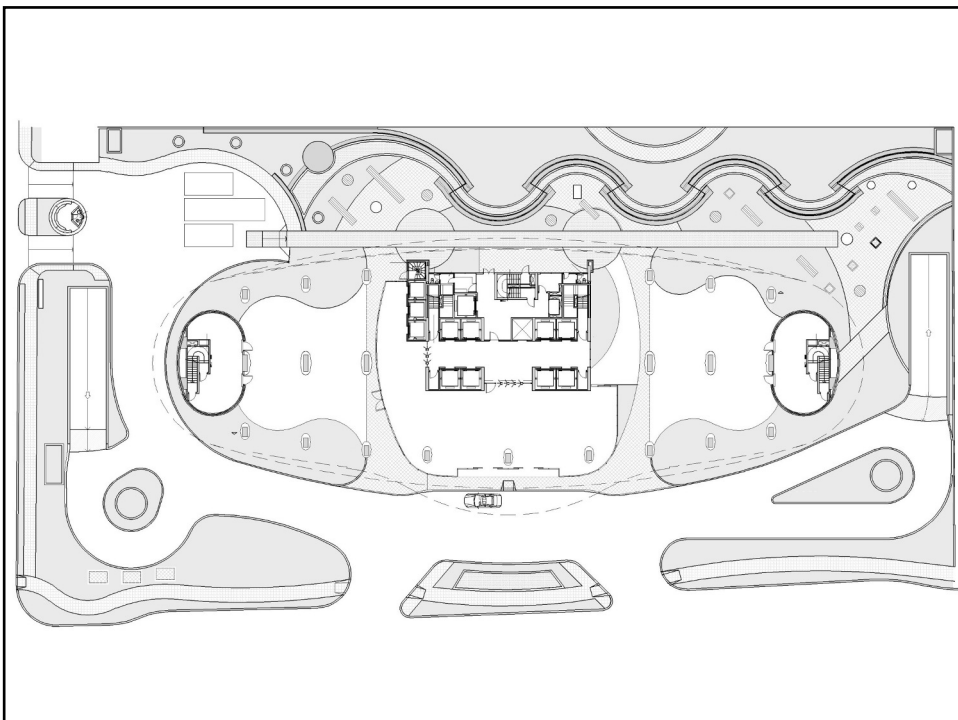
2006



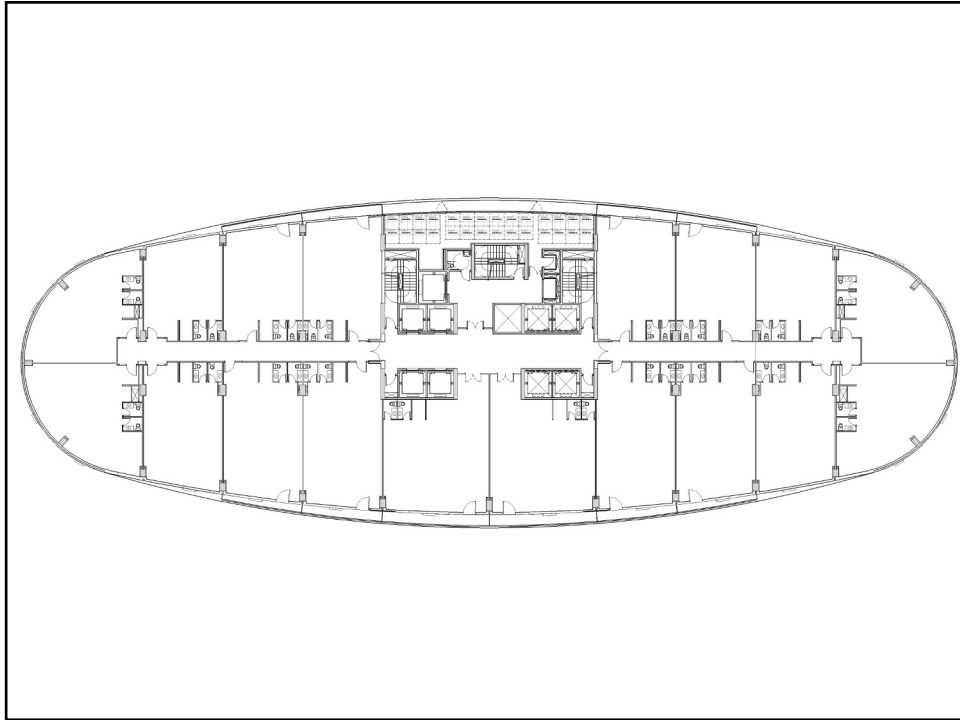
2



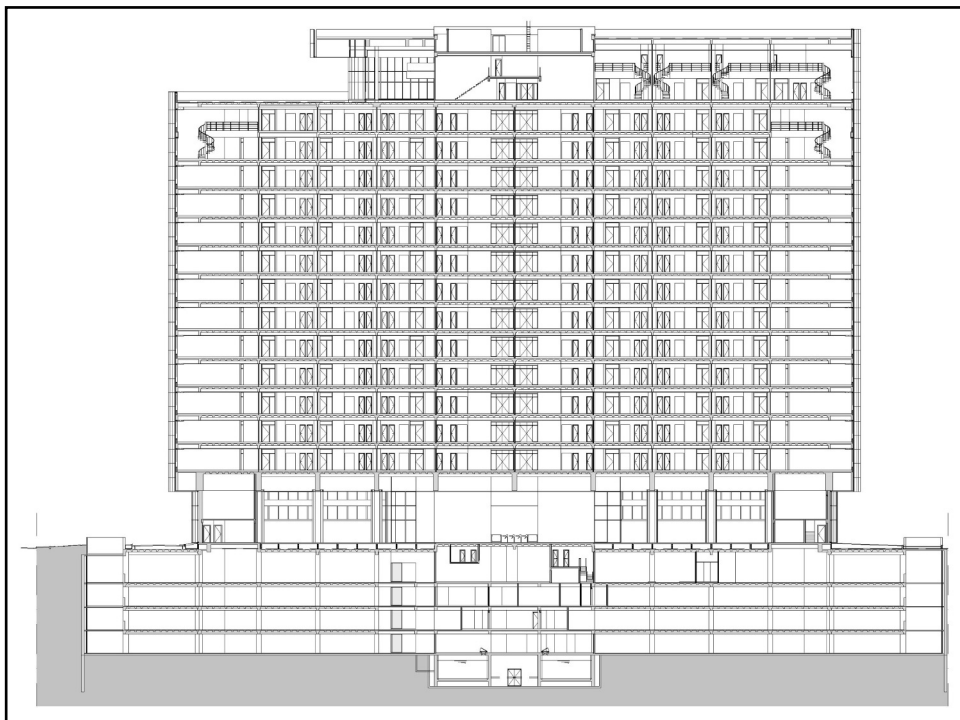
3



4



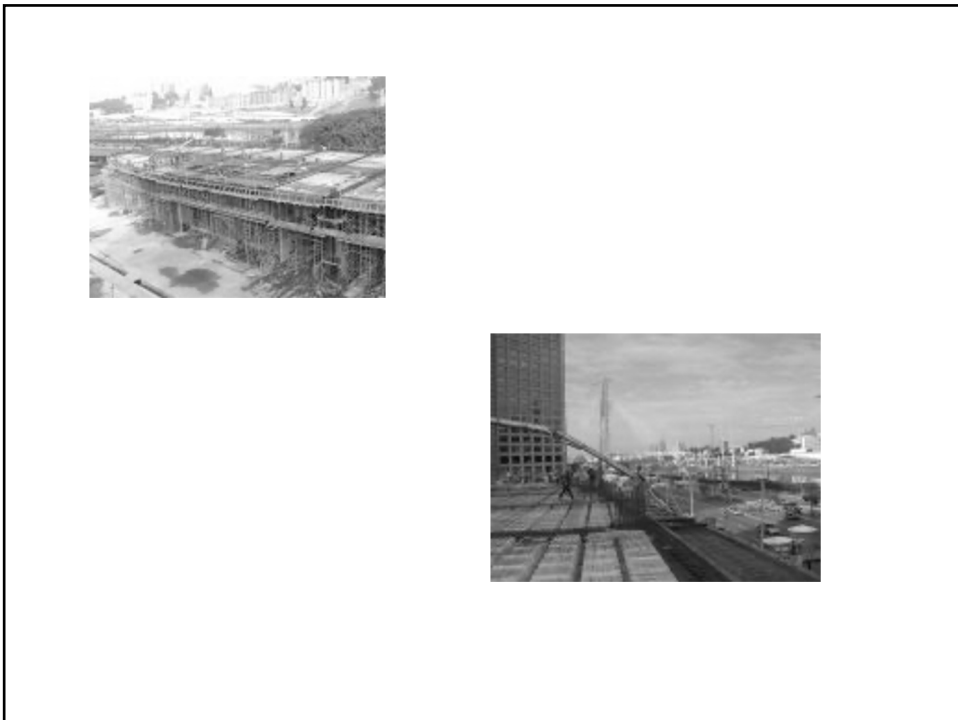
5



6



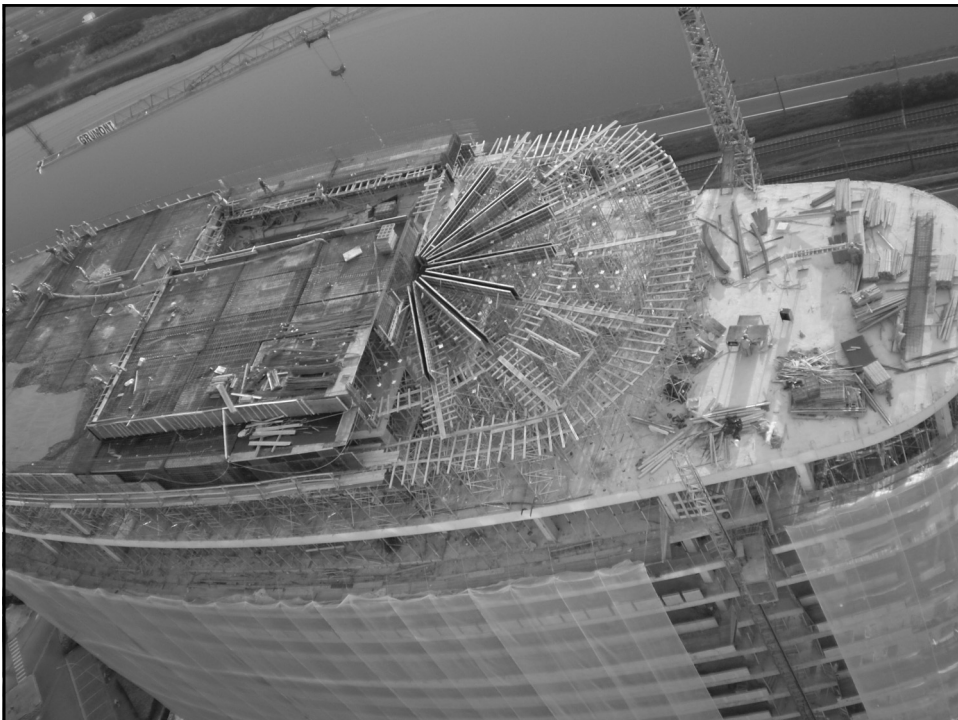
7



8



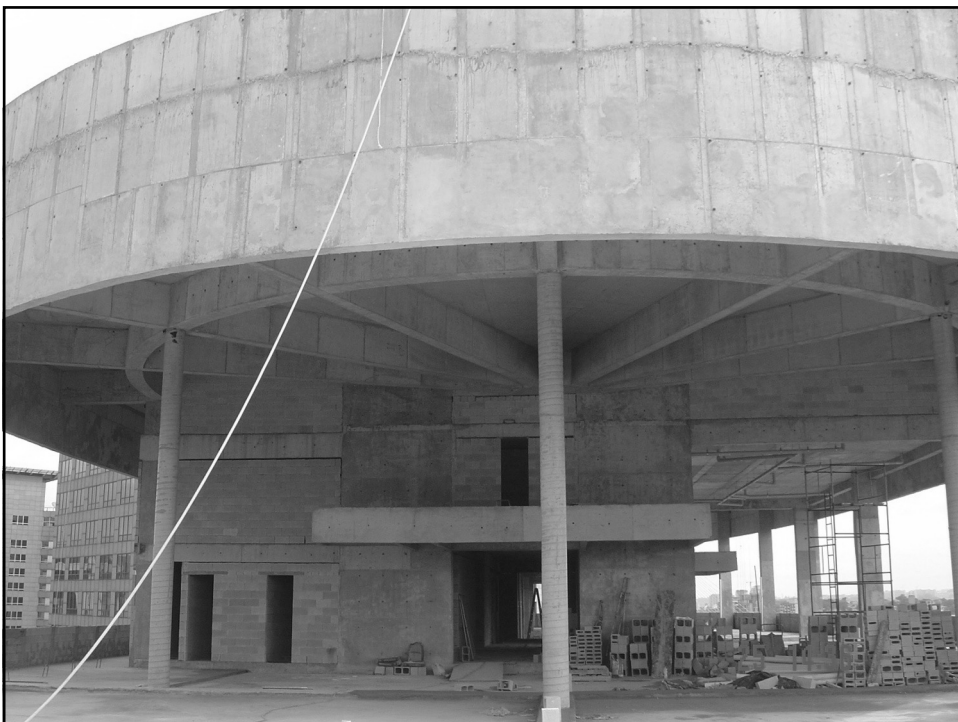
9



10



11



12



13



14

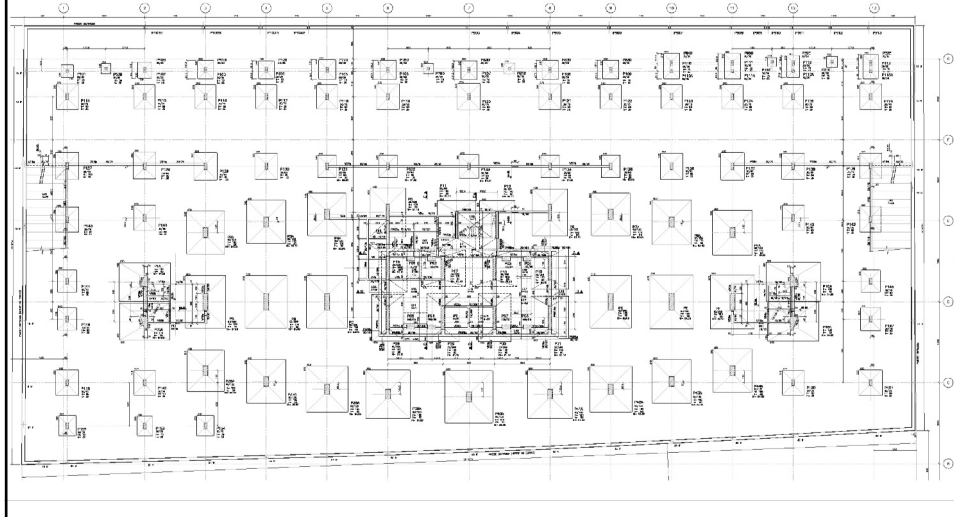


15



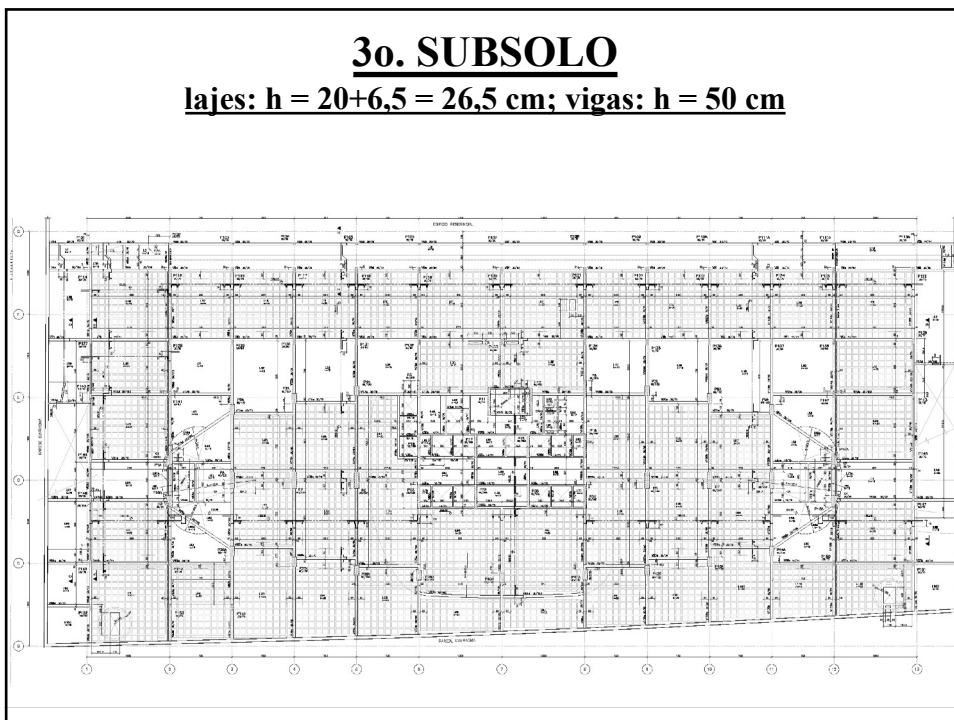
16

FUNDAÇÕES
4 a 7 kgf/cm²

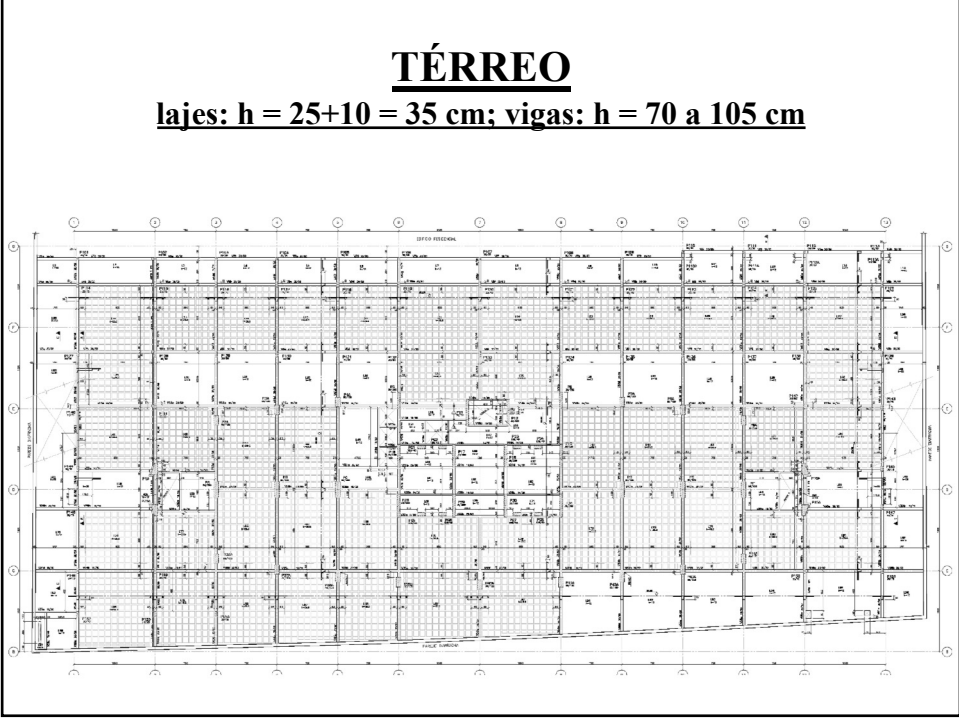


17

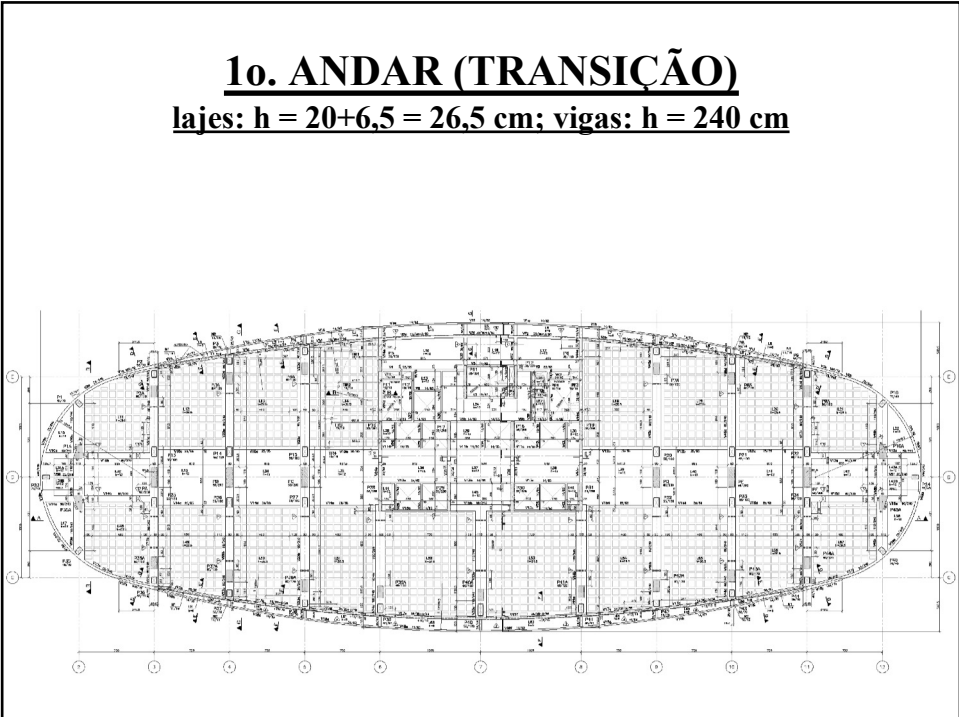
3o. SUBSOLO
lajes: $h = 20 + 6,5 = 26,5$ cm; vigas: $h = 50$ cm



18



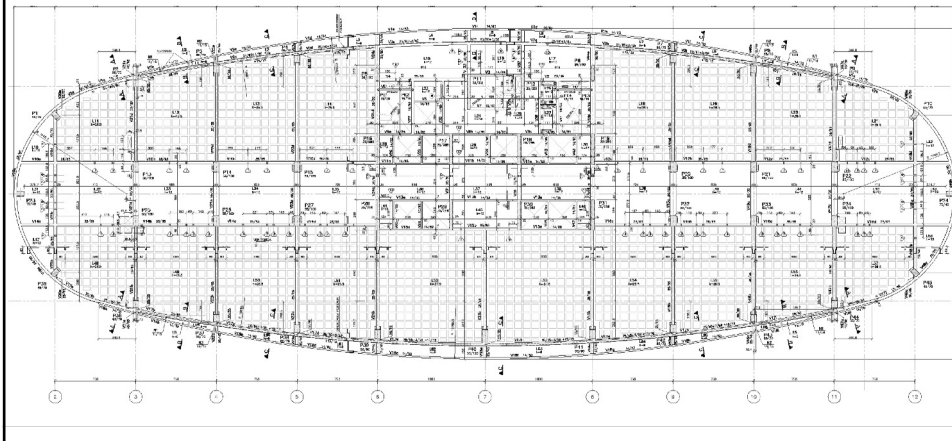
19



20

ANDAR TIPO

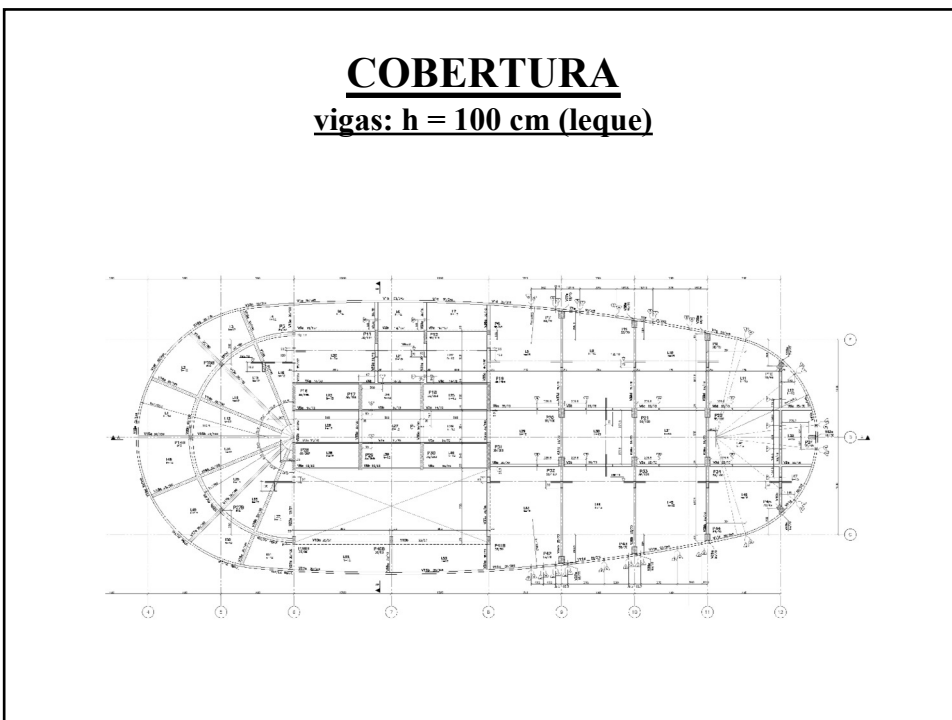
lajes: $h = 20+6.5 = 26,5$ cm; vigas: $h = 65$ cm
espessura média: 21 cm



21

COBERTURA

vigas: $h = 100$ cm (leque)



22

CORTE (TRANSIÇÃO)

fck = 50 Mpa

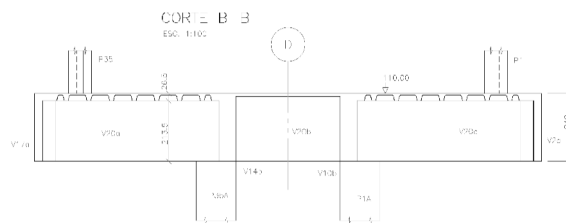
1a. etapa: 1° a 4°

2a. etapa: 5° a 9°

3a. Etapa: 10° a 13°

injeção

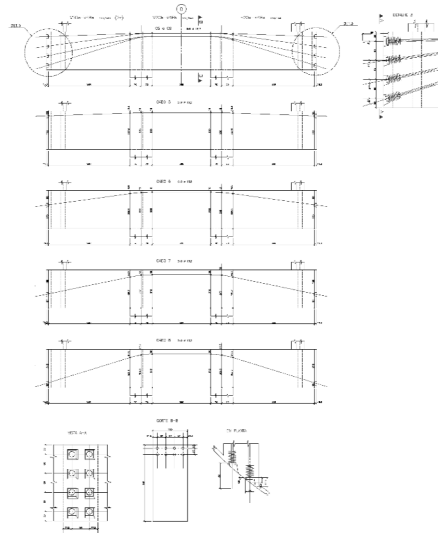
4a. Etapa: cobertura + ático



23

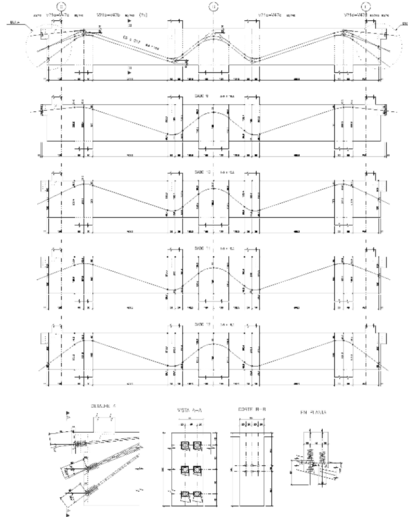
TRANSIÇÃO (1)

8 cabos de 9 cordoalhas 15,2 mm



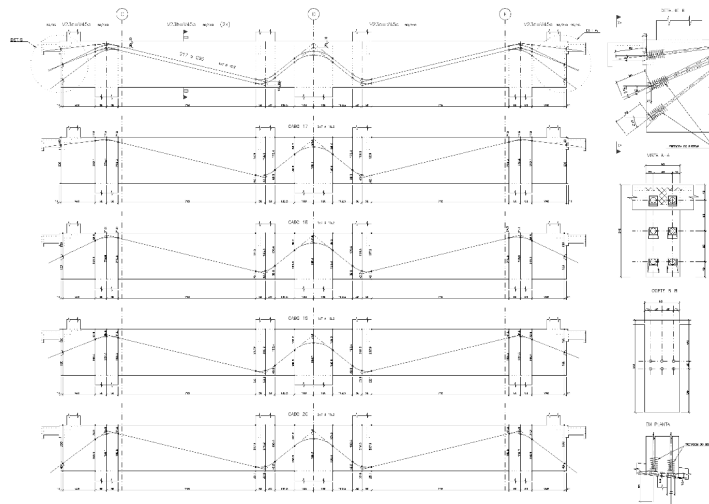
24

TRANSIÇÃO (2)
6 cabos de 6 cordoalhas 15,2 mm



25

TRANSIÇÃO (3)
6 cabos de 6 cordoalhas 15,2 mm



26



27



28

EDIFÍCIO PEDRA GRANDE

Arq.: Pedro Paulo Saraiva

1962



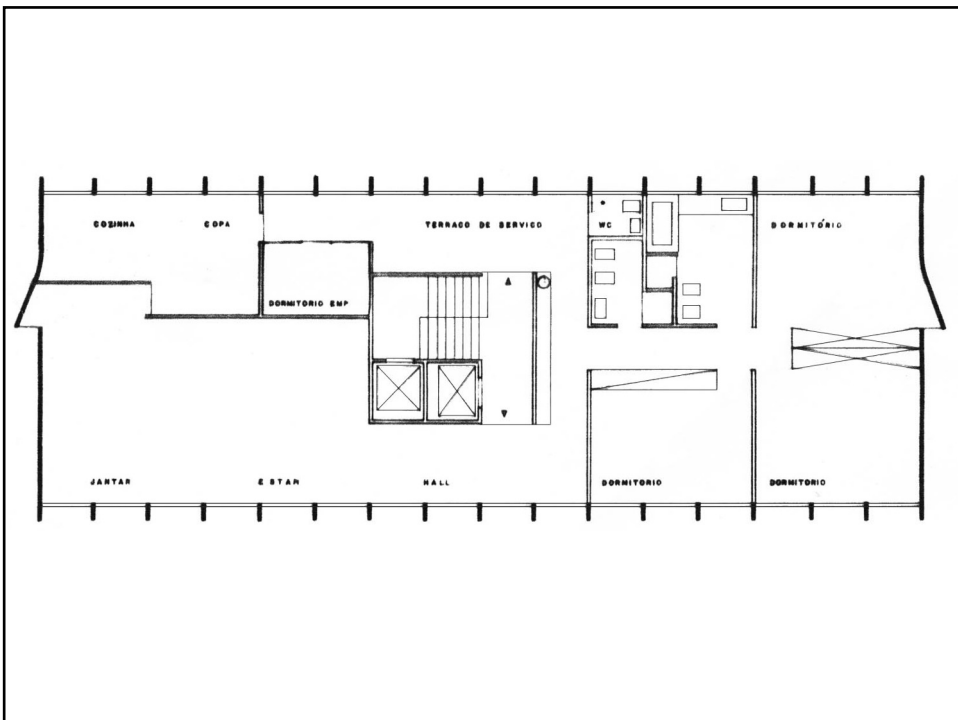
29



30



31



32



33

PARQUE ANHEMBI – HOTEL

Arq.: Jorge Wilhelm e Miguel Juliano

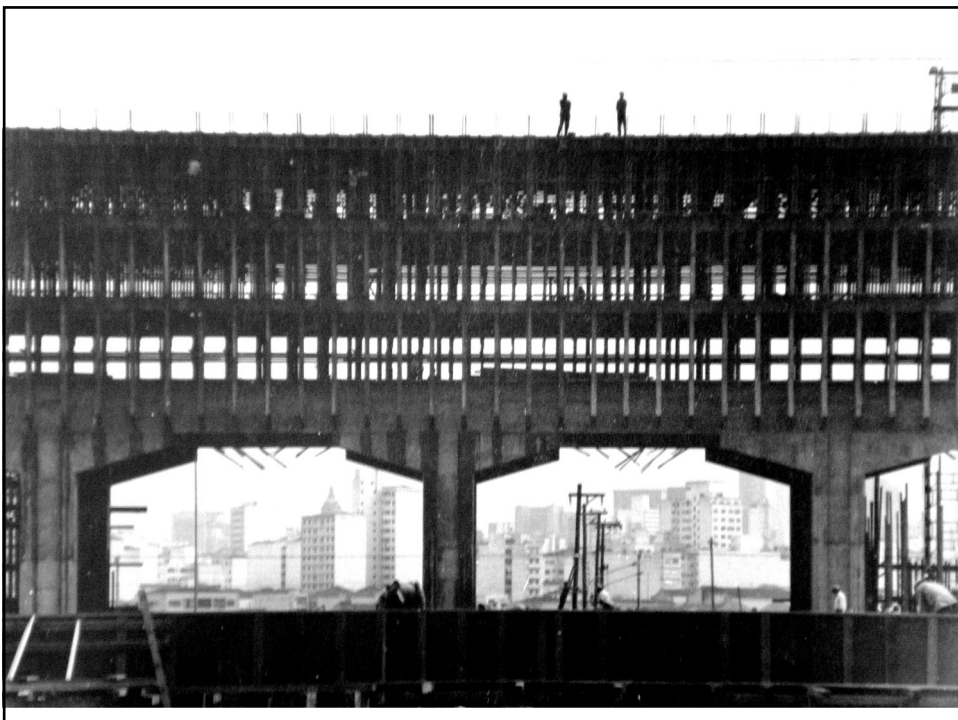
1970



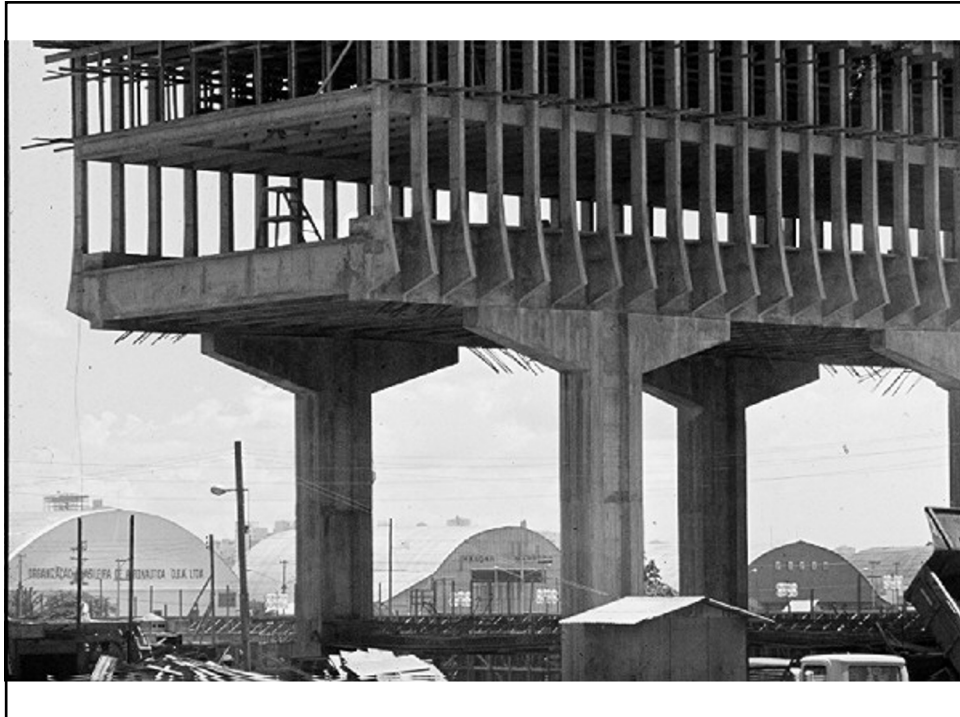
34



35



36



37

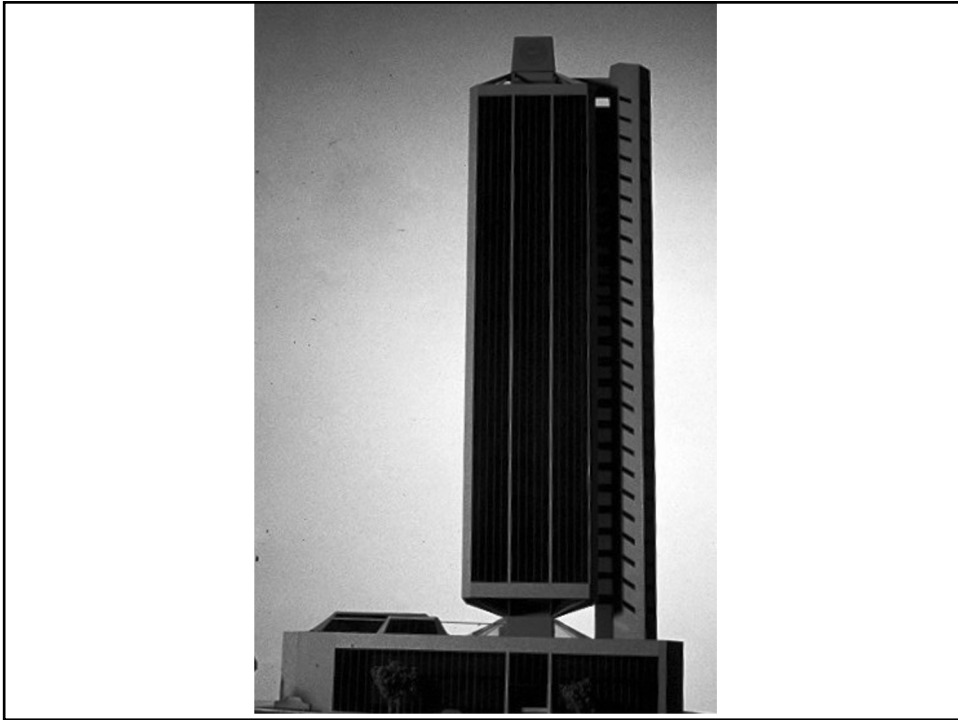
EDIFÍCIO ASAHI

Arq.: Cazé e Associados

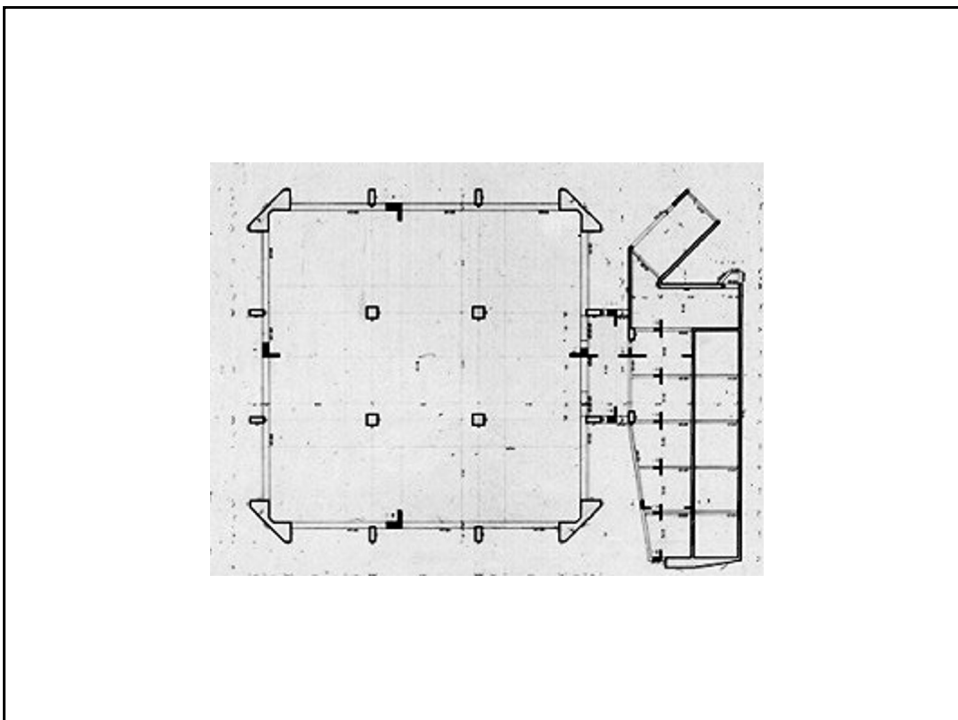
1973



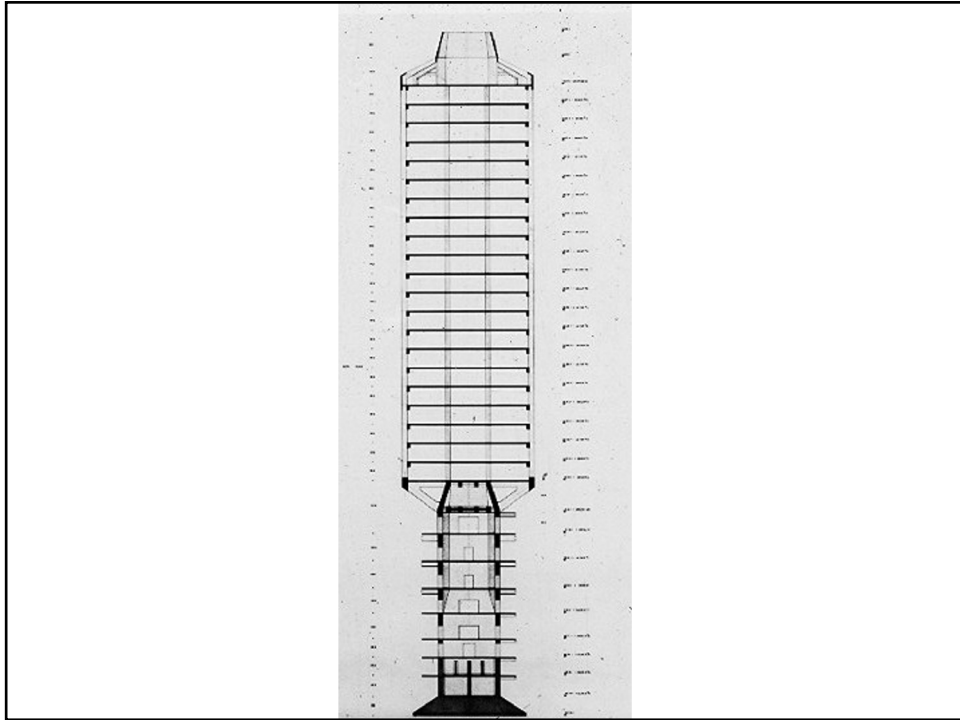
38



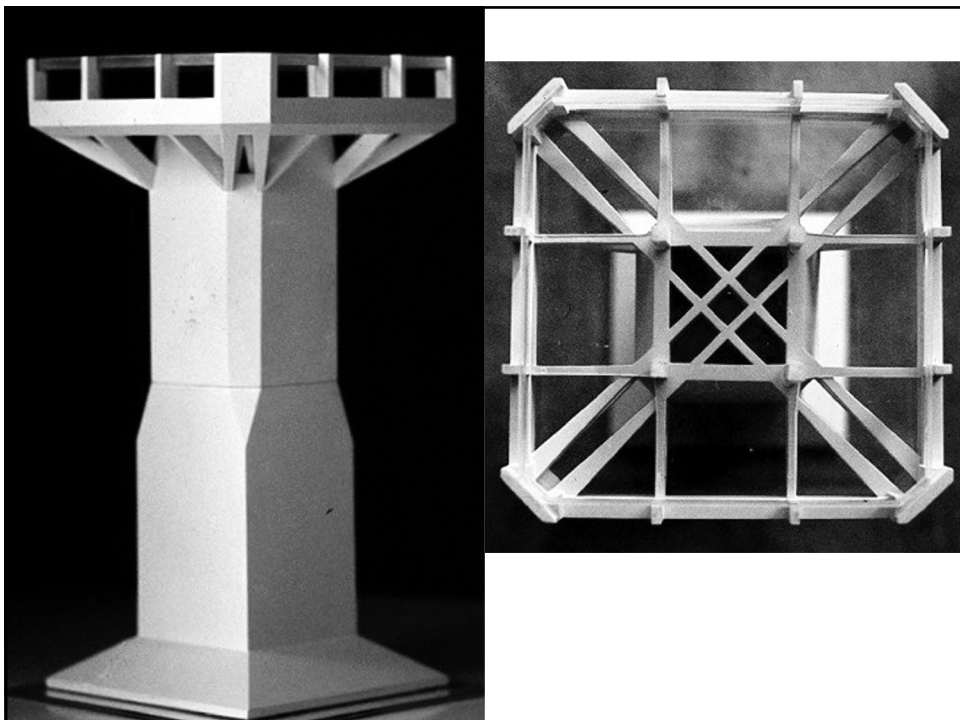
39



40



41



42

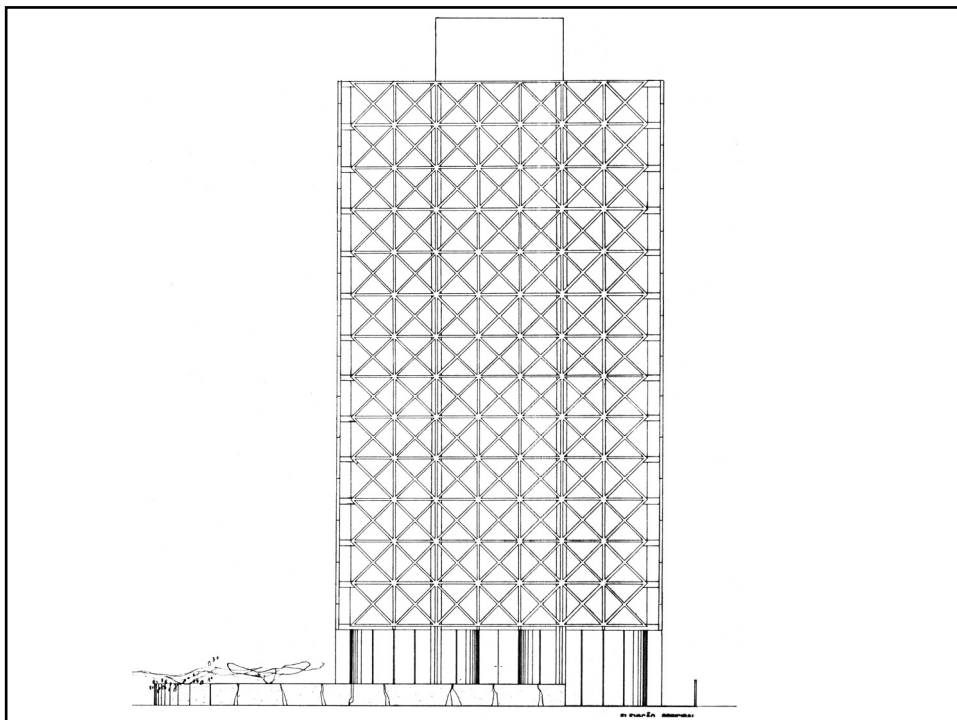
R. PROF. ARTUR RAMOS

Arq.: Pedro Paulo Saraiva

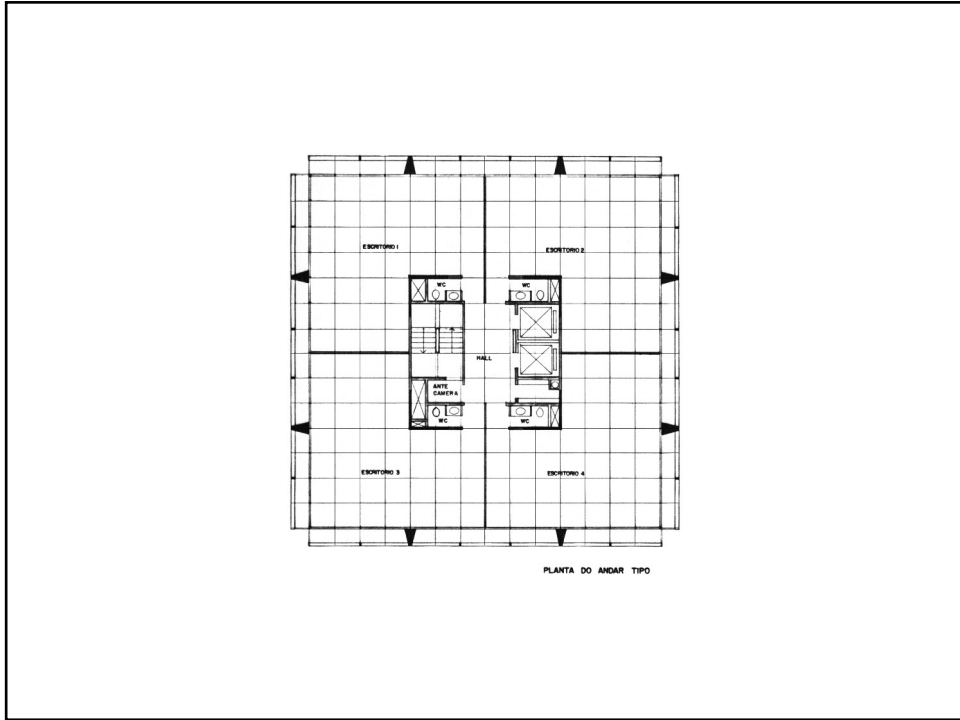
1974



43



44



45



46

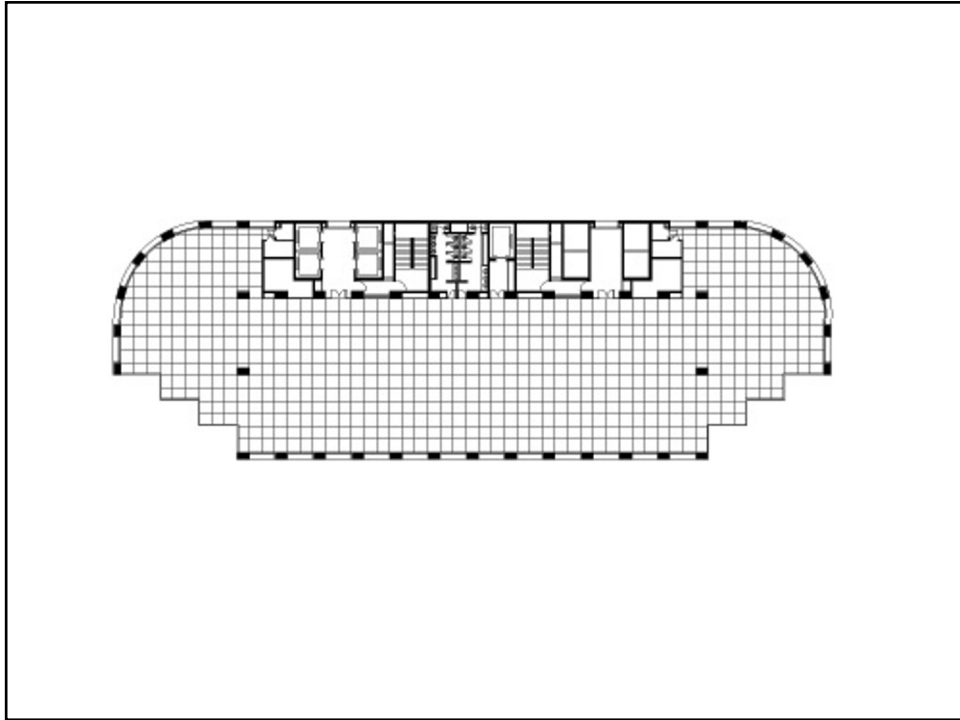
CITICORP CENTER
Arq.: Gian Carlo Gasperini (Croce, Aflalo
& Gasperini)
1983



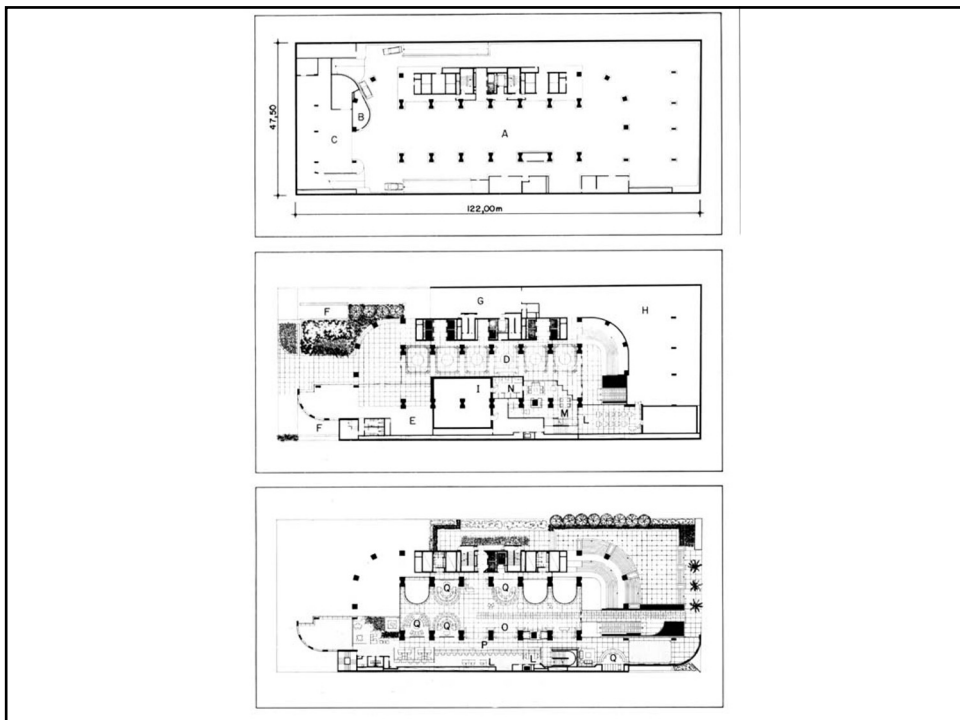
47



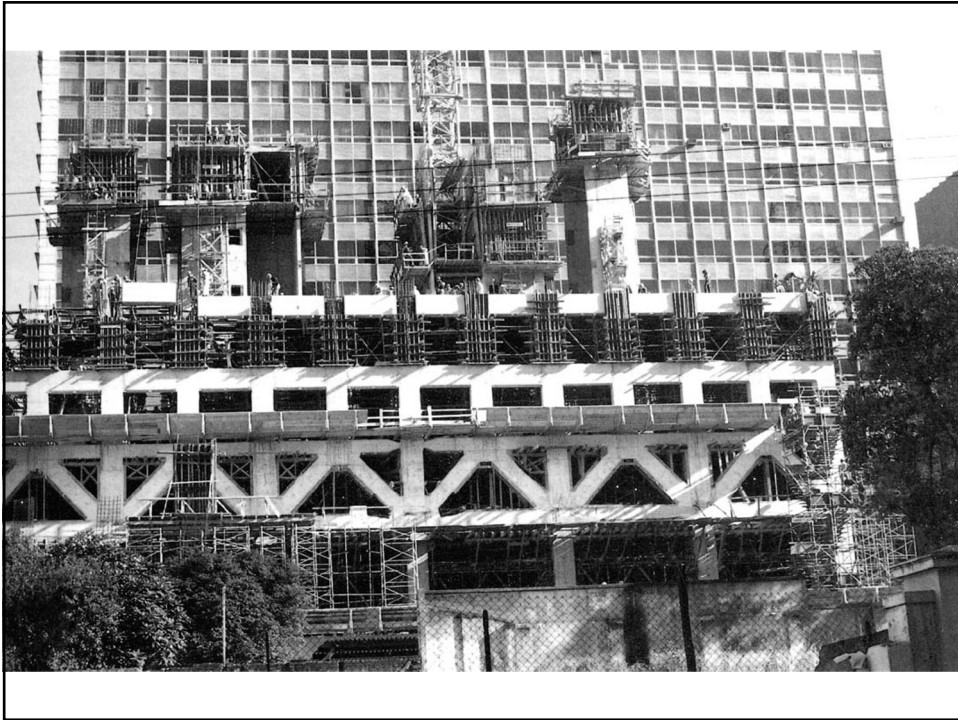
48



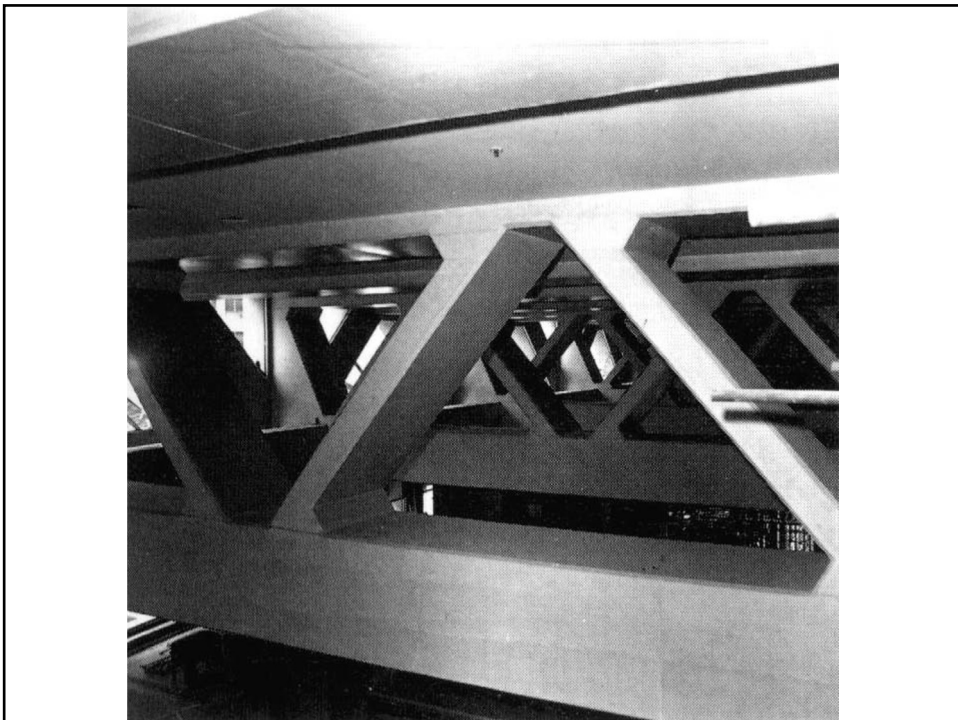
49



50



51



52



53



54

ED. BROOKFIELD MALZONI

Arq.: Marc Rubin (Botti Rubin)

2010

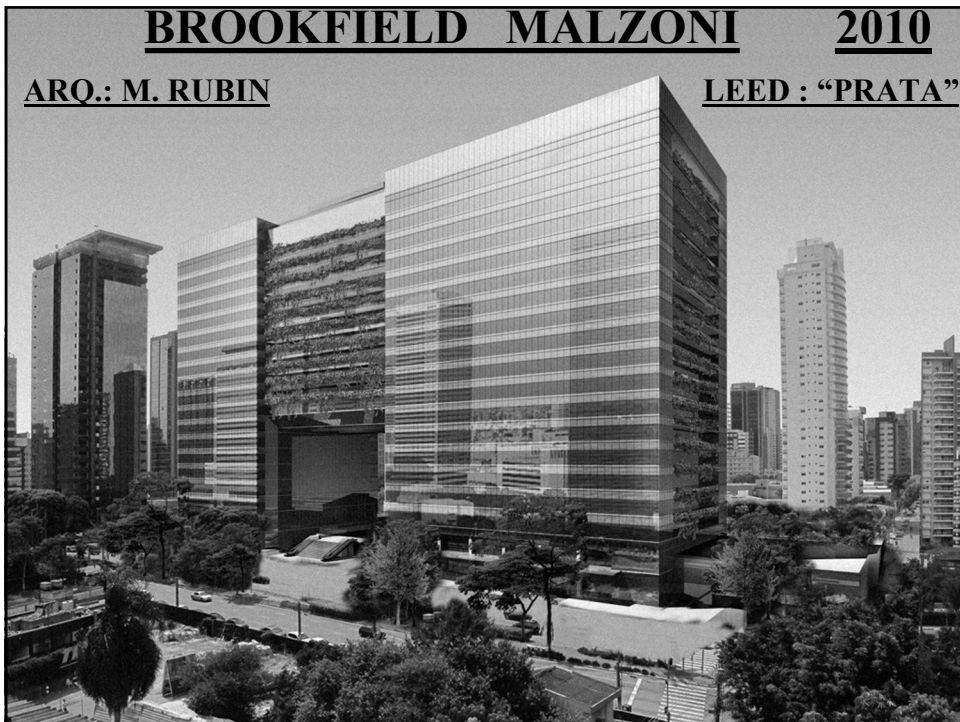


55

BROOKFIELD MALZONI **2010**

ARQ.: M. RUBIN

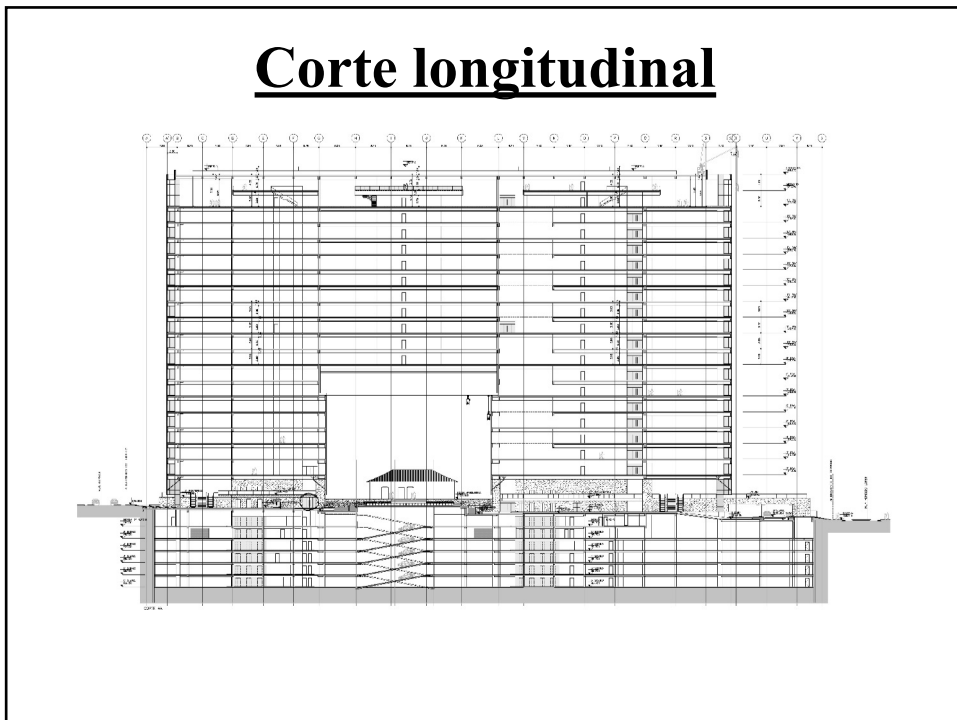
LEED : "PRATA"



56



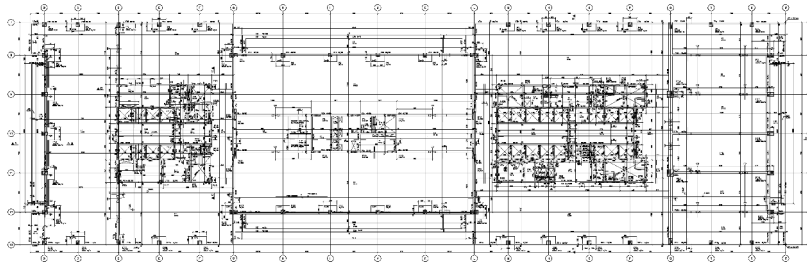
57



58

Andar tipo (3 torres independentes)

Lajes e vigas protendidas. Concreto: 40 Mpa
Lajes: h=20 cm, L=13 m; vigas h=80 cm, L= 18m



59



60



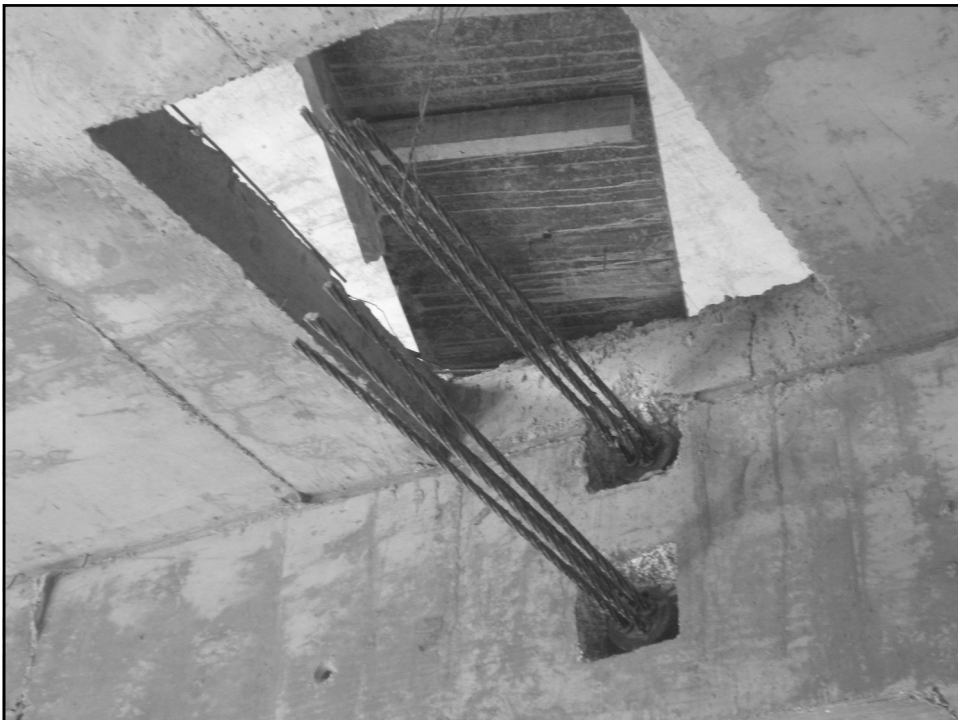
61



62



63



64

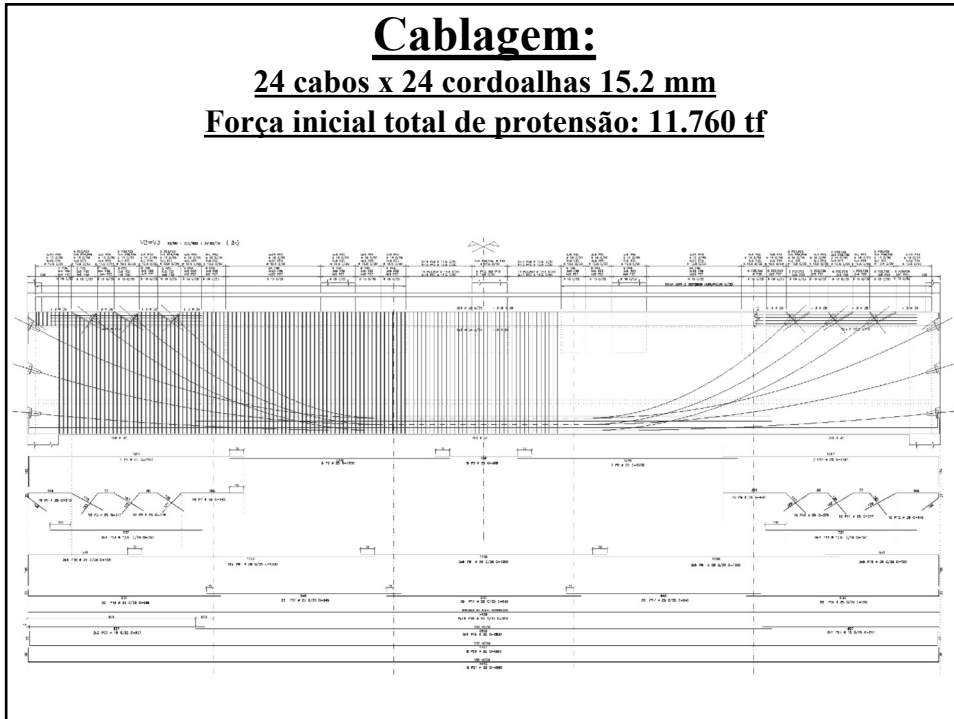


65

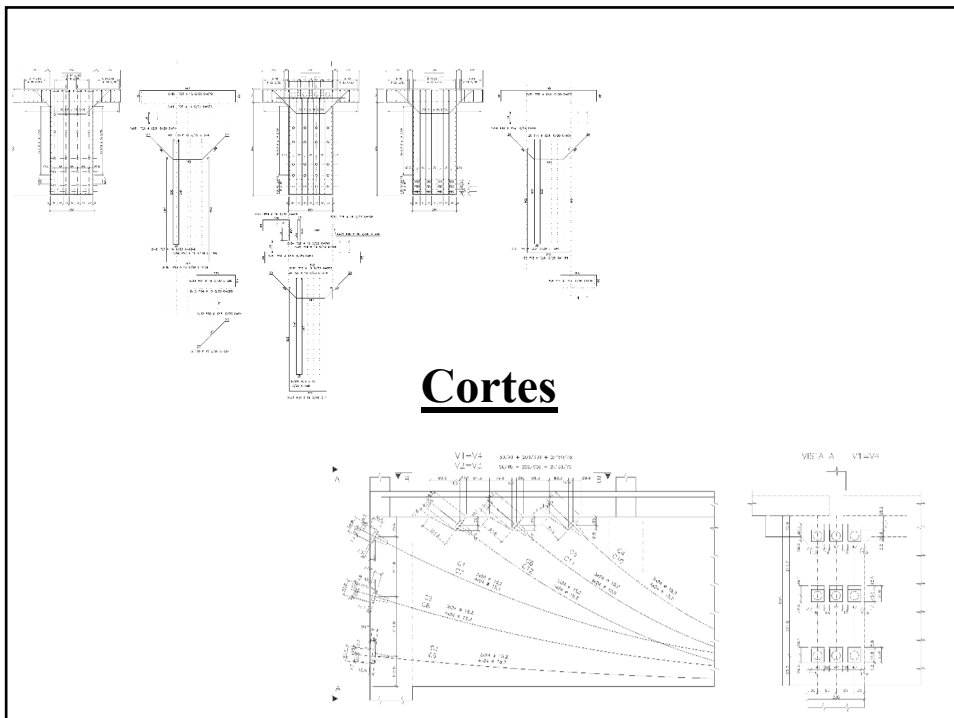


66

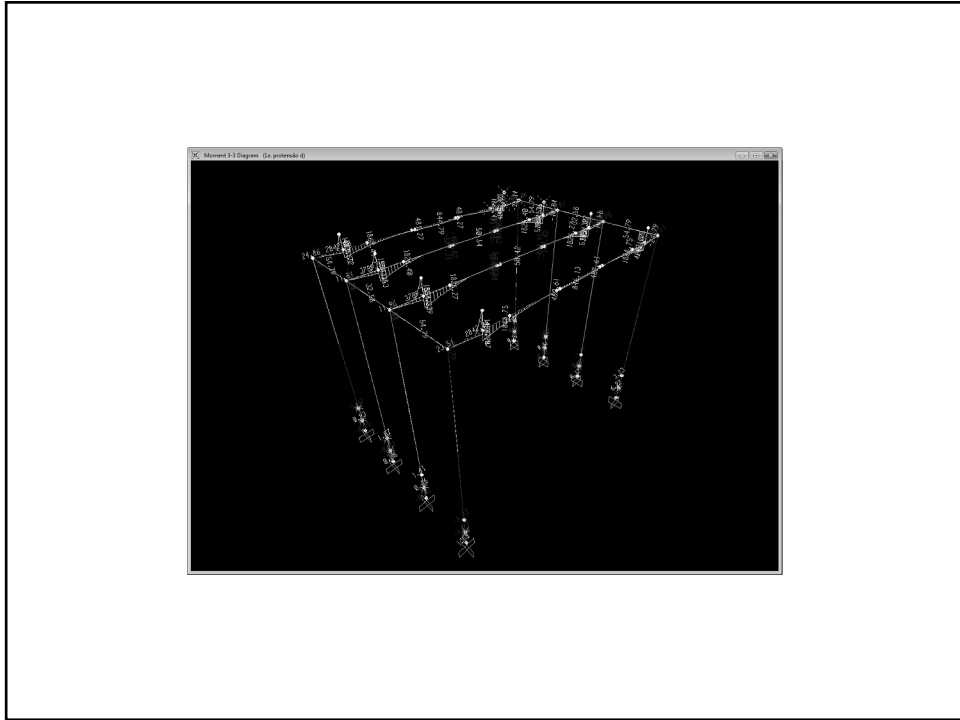
Cablagem:
24 cabos x 24 cordoalhas 15.2 mm
Força inicial total de protensão: 11.760 tf



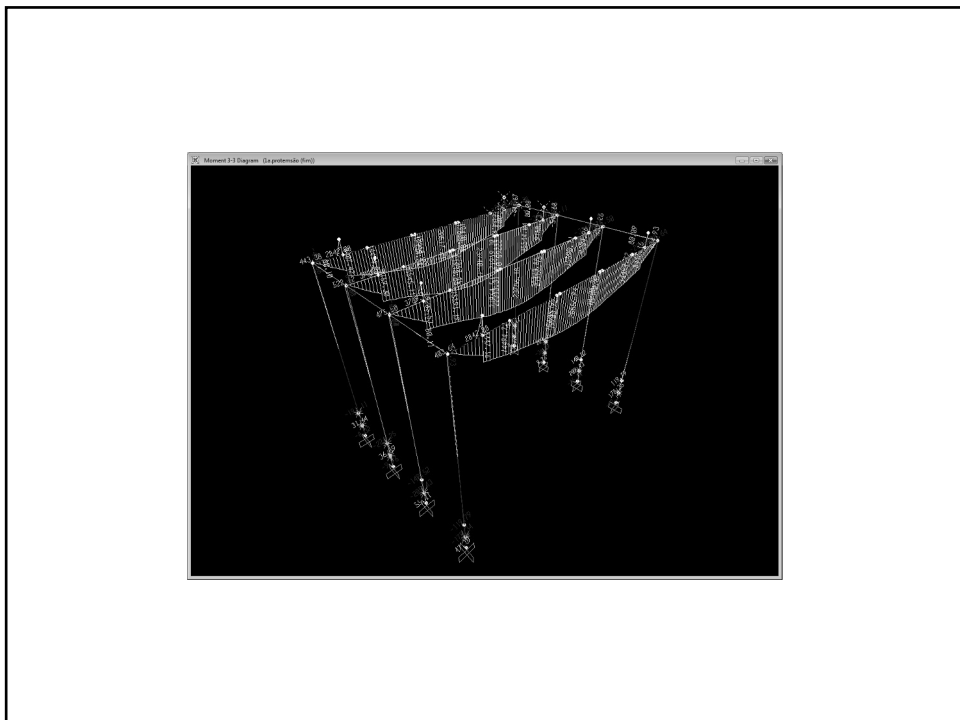
67



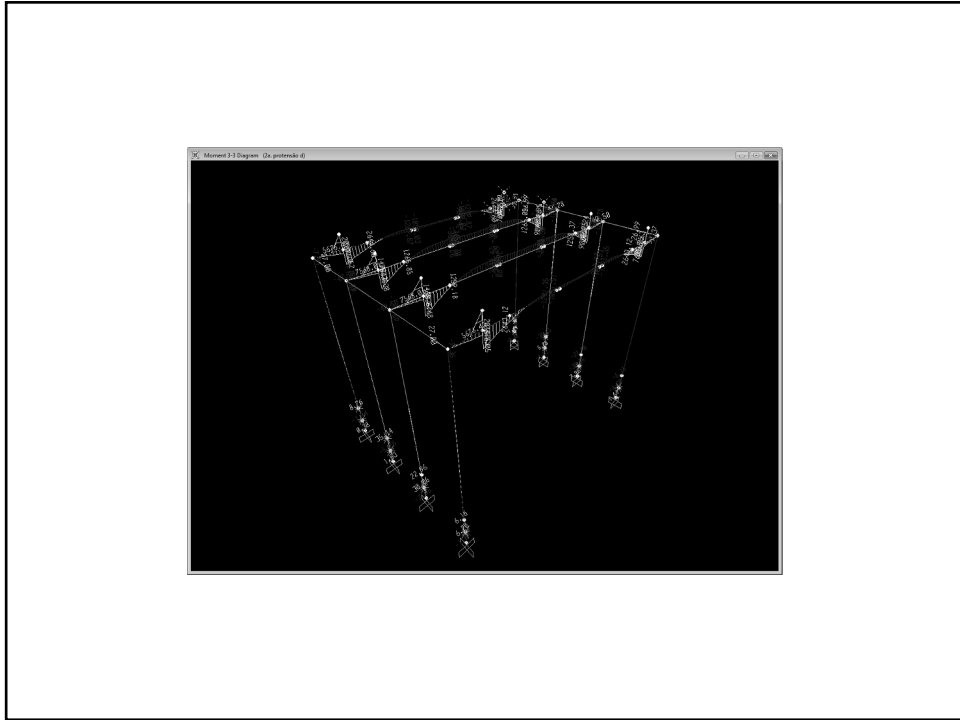
68



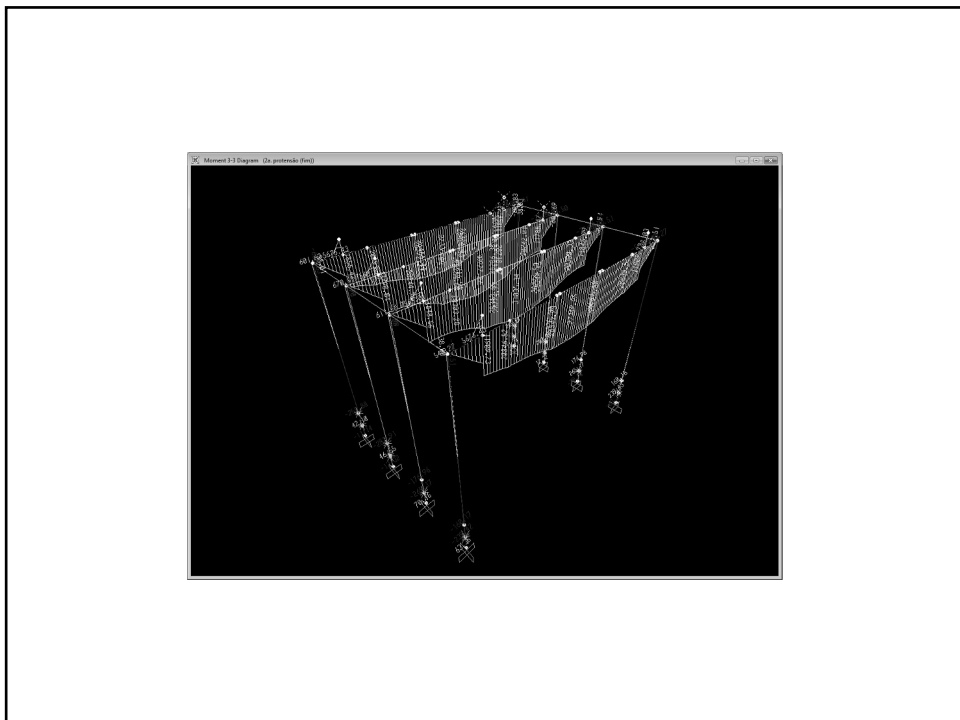
69



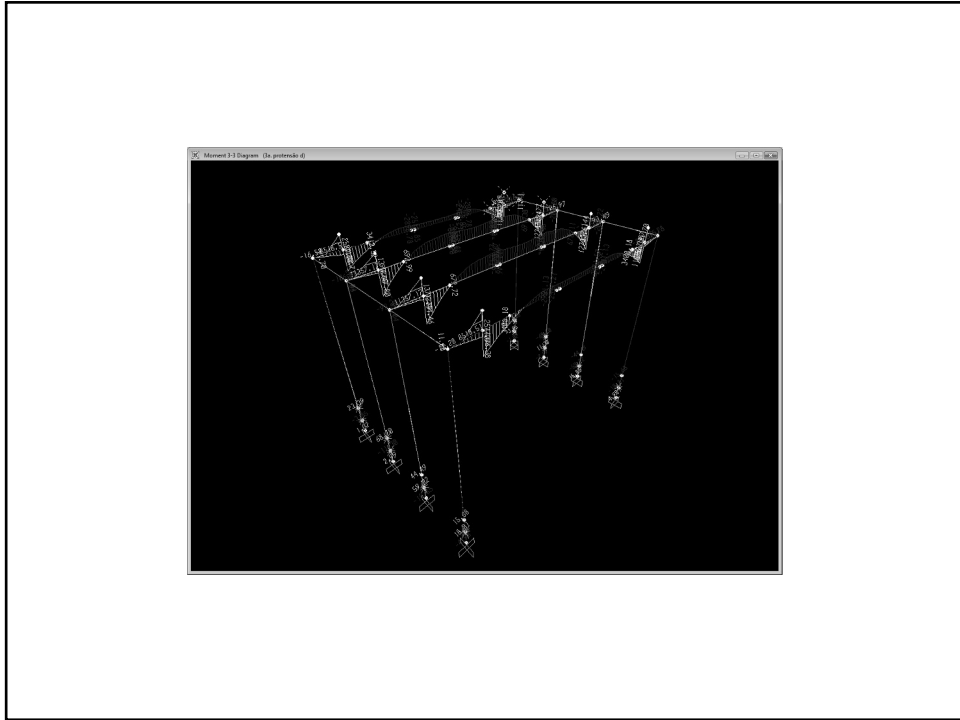
70



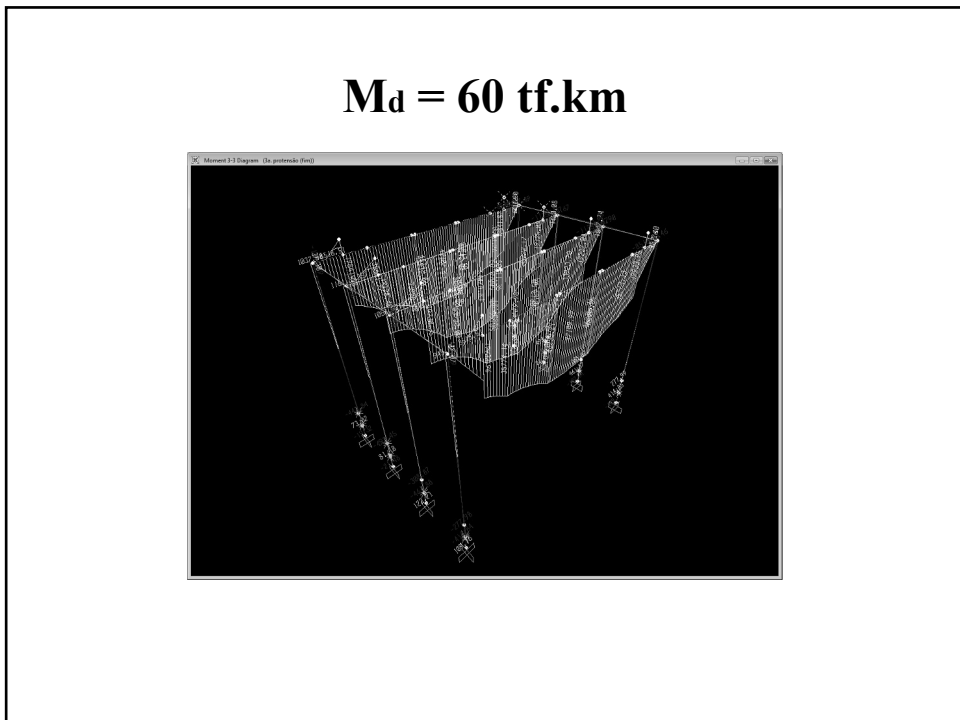
71



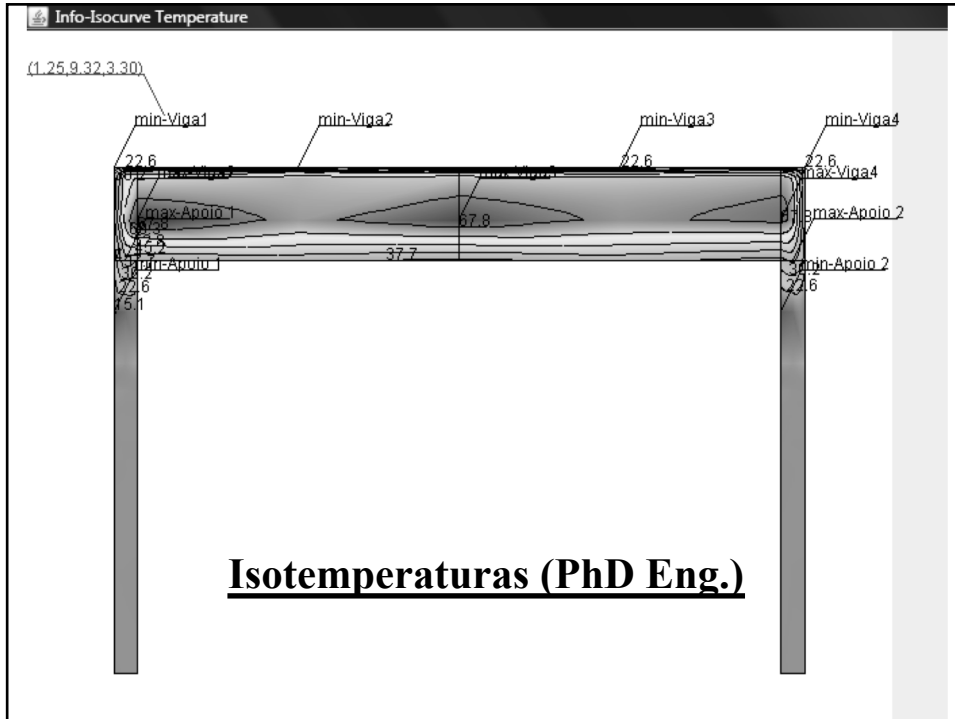
72



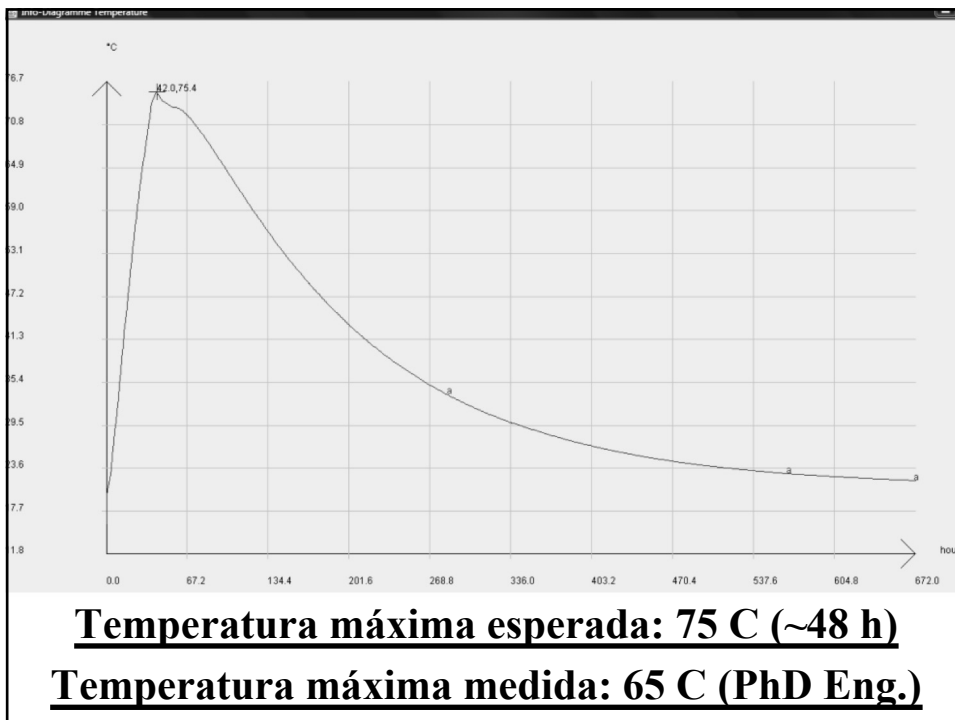
73



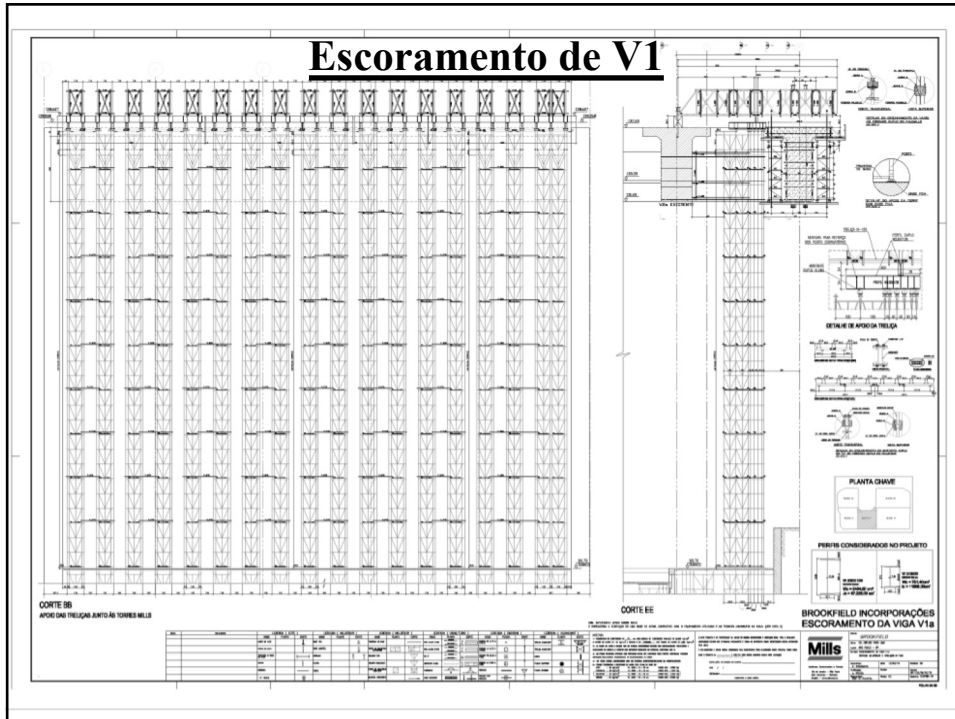
74



75



76



77



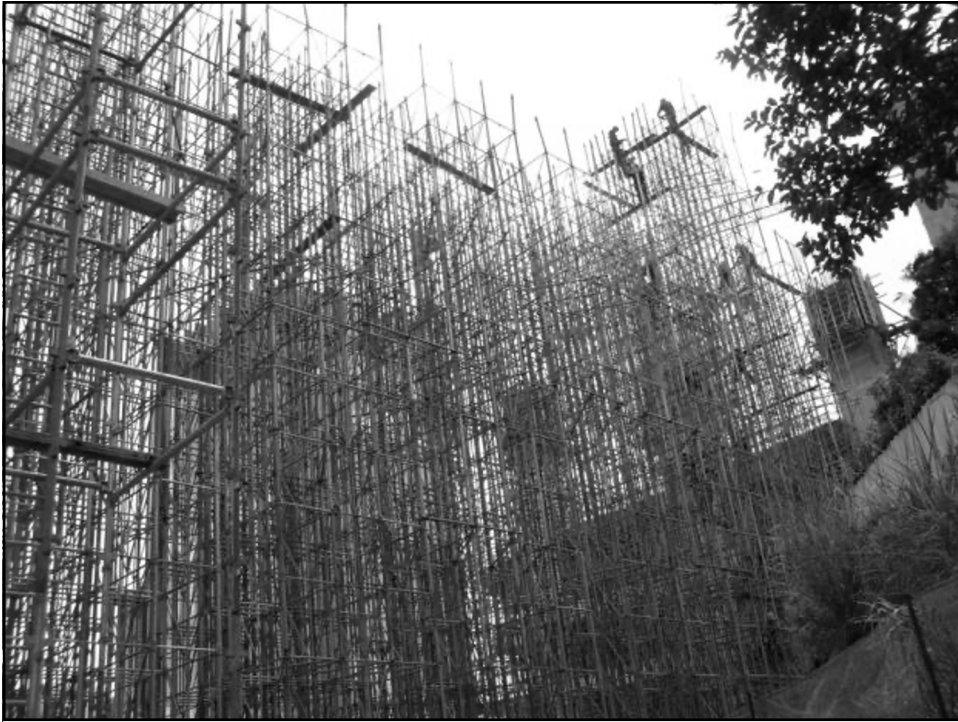
78



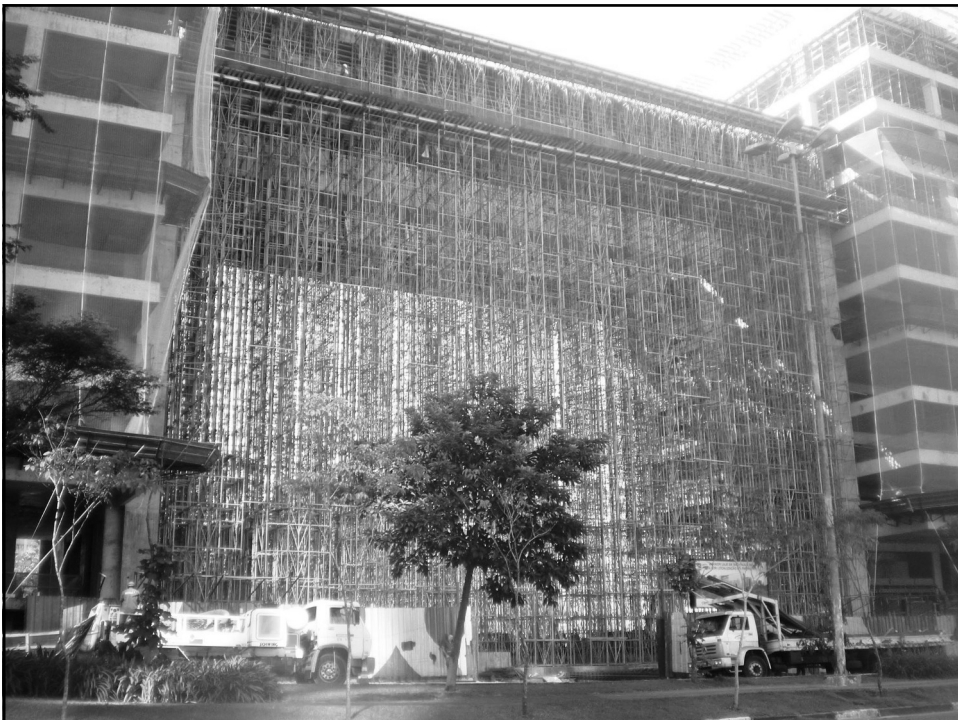
79



80



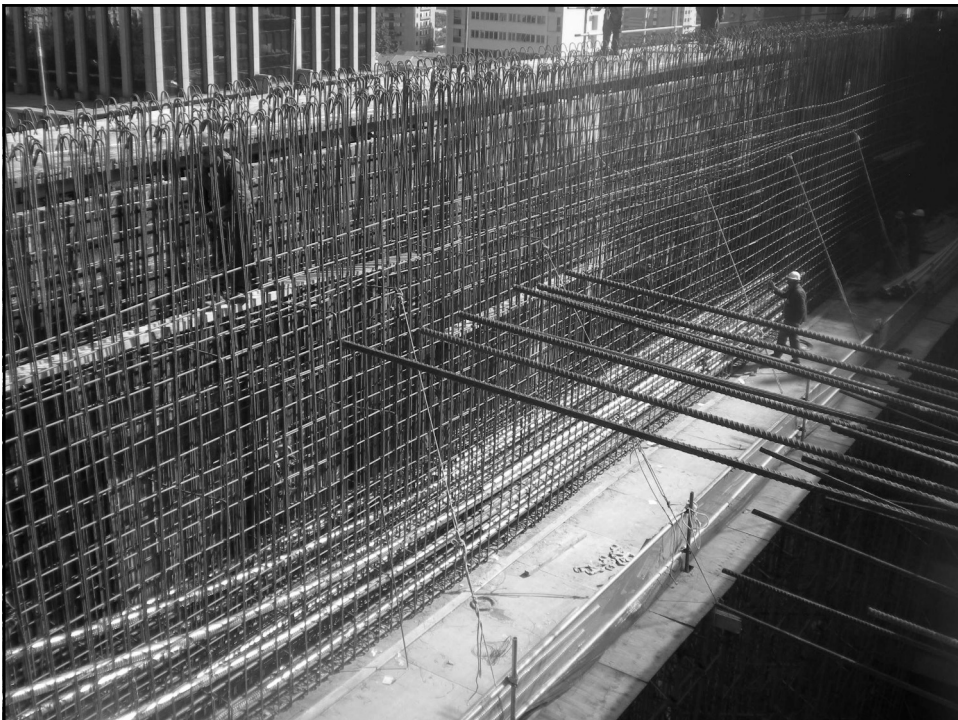
81



82



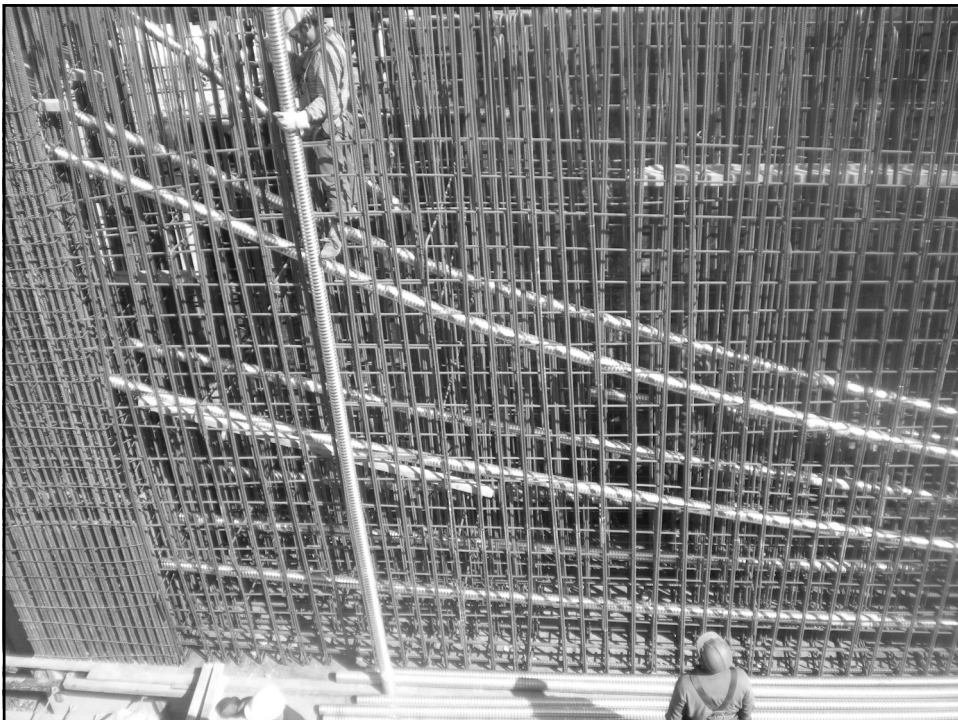
83



84



85



86



87



88



89



90



91



92



93



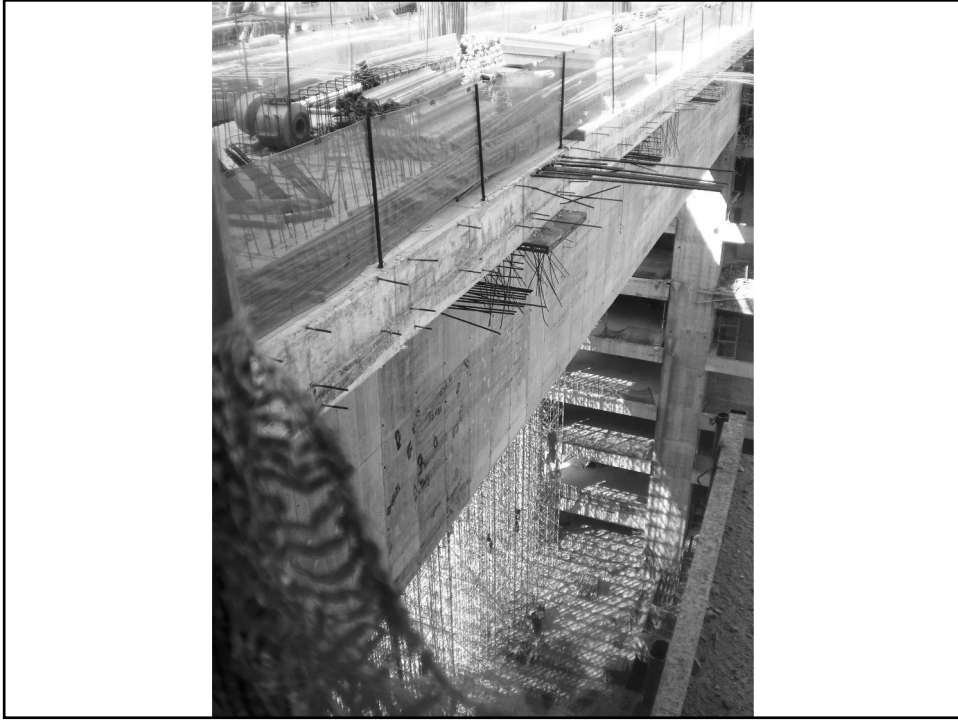
94



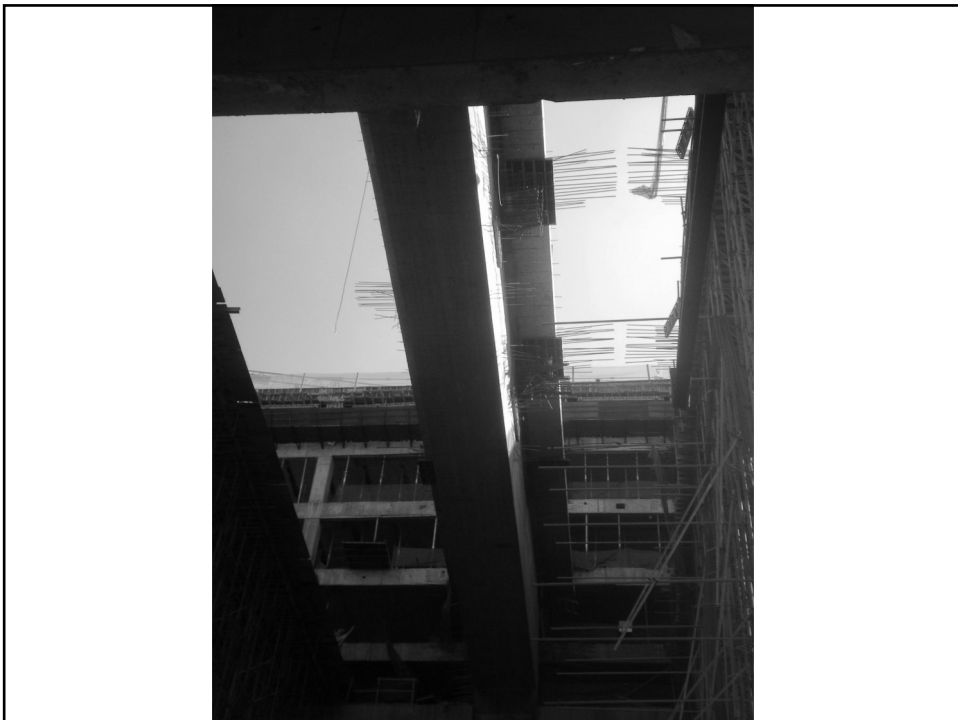
95



96



97



98

OBRIGADO!